

Shelving Rock Meadow

The Shelving Rock



*A single-family restricted private development
on the banks of the pristine Doe River
in Roan Mountain, Tennessee*



- 13 Single-Family Home Sites
- Common Area & Walking Trail
- Private Access to the Doe River
- Private Pure Mountain Water System
- Energy-Efficient, Low-Maintenance Homes

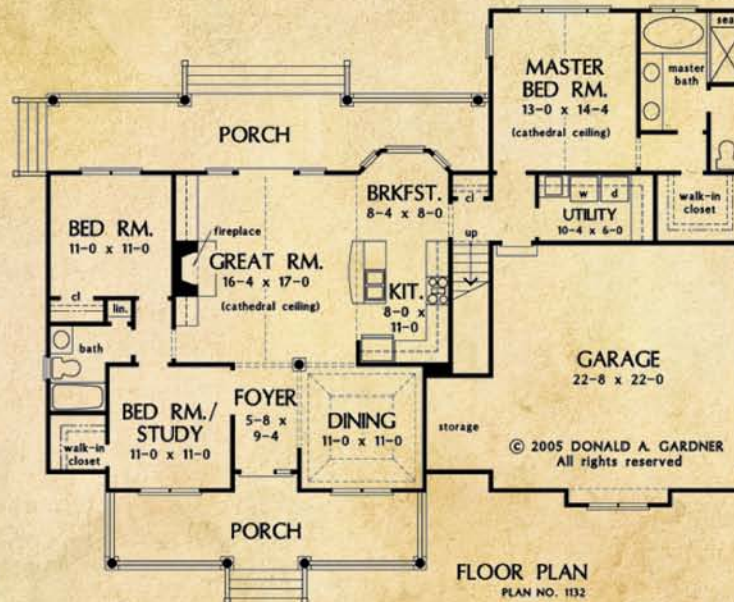
Convenient access to:

- Roan Mountain State Park
- Watauga Lake & Ski North Carolina
- Cherokee & Pisgah National Forest
- The Appalachian Trail

For more information, call 423-772-4996 or 423-534-5700, or visit www.ShelvingRockMeadow.com

Shelving Rock Meadow

- Homes ranging from approximately 1,500 sq. ft. to approximately 2,200 sq. ft. with two-car garage, spacious porches and decks.
- Single-level open floor plans with optional bonus room.
- Vaulted and tray ceilings, crown moldings, wide base moldings, granite/solid surface counter tops, tile/stone baths, hardwood floors, tile and carpet.



Sample Suggested Floor Plan

- Low-maintenance natural siding with accent stone, architectural shingles, low-E insulated windows and doors.
- Energy-efficient heating systems and gas fireplaces.



DEVELOPMENT FEATURES

- All riverside areas owned in common with significant open spaces for fishing, hiking and picnicking.
- Private half mile walking trail around the property.
- Private paved drive with rear entrances to homes.
- All underground utilities.
- Private water system.
- Restricted home sites.
- Common grounds maintained by home owners association.

AMENITIES

Located in Roan Mountain, Tennessee along the Doe River, classified as “pristine water” by the USEPA, a class ‘A’ trout stream.

The site is one-half mile from Roan Mountain State Park and 10 miles from the top of Roan Mountain, the home of the world’s largest natural rhododendron gardens covering some 600 acres at an elevation of over 6,300 feet, the third highest peak east of the Mississippi River. The site is a 15-minute drive from Watauga Lake and to ski and golf resorts in North Carolina.

HISTORY

Shelving Rock Meadow is situated on the site of the first nights encampment of the “Overmountain Men.” On September 29, 1780, these patriots stored their powder and supplies out of the rain under the “Shelving Rock” located just across the Doe River from the meadow. These frontiersmen continued their march and ultimately defeated the British Regular Army at the Battle of Kings Mountain and turned the tide of the Revolutionary War leading to the ultimate defeat of the British and the independence of the Colonies.

For more information, call 423-772-4996 or 423-534-5700, or visit www.ShelvingRockMeadow.com